

**ELEVATION LEGEND**

**DIVISION 3 - CONCRETE**

3.A PRE-CAST SIMULATED LIMESTONE ARCH

**DIVISION 4 - MASONRY**

- 4.A RUNNING BOND BRICK (TYPE 1 - DISTRESSED BRICK PAINTED WHITE)
- 4.B RUNNING BOND BRICK (TYPE 2 - CALVERT ROSE SMOOTH BRICK)
- 4.C RUNNING BOND BRICK (TYPE 3 - CALVERT 40 MOD #5141)
- 4.D RUNNING BOND BRICK (TYPE 4 - CONTINENTAL 594 MOD #5639)
- 4.E RUNNING BOND BRICK (TYPE 5 - OLD RICHMOND 3-115)
- 4.F RUNNING BOND BRICK (TYPE 6 - STD. 475 MOD)
- 4.G RUNNING BOND BRICK (TYPE 7 - SANTA FE 3-542)
- 4.H CULTURED STONE FACING MATERIAL
- 4.J 12" BRICK "JACK-ARCH"
- 4.K BRICK SILL COURSE
- 4.L BRICK SOLDIER COURSE
- 4.M SPLIT FACE CONCRETE MASONRY UNITS (YBP-72)
- 4.N BRICK QUOINING
- 4.O BRICK ROWLOCK COURSE
- 4.P BRICK HEADER COURSE
- 4.Q BRICK ARCH

**DIVISION 5 - METALS**

5.A ALUMINUM GUTTER AND DOWNSPOUT SYSTEM

**DIVISION 6 - WOOD & PLASTICS**

- 6.A SIMULATED WOOD TRIM BOARD (VARIOUS SIZES)
- 6.B SIMULATED WOOD COLUMN COVERS (FRP)
- 6.C SIMULATED WOOD DECORATIVE BRACKETS
- 6.D SIMULATED WOOD SHUTTERS

**DIVISION 7 - THERMAL & MOISTURE PROTECTION**

- 7.A PAC-CLAD STANDING SEAM METAL ROOFING SYSTEM, SEAMS TO BE 18" O.C. (ZINC)
- 7.B ARCHITECTURAL ASPHALT SHINGLE SYSTEM (SIMULATED SLATE ROOF)
- 7.C ARCHITECTURAL ASPHALT SHINGLE ROOFING SYSTEM (LIGHT GREY)
- 7.D FABRIC AWNING
- 7.E HARDI-PLANK HORIZONTAL LAP SIDING SYSTEM (NAVAJO WHITE)
- 7.F HARDI-PANEL VERTICAL SIDING SYSTEM (KHAKI BROWN)
- 7.G BRICK EXPANSION JOINT
- 7.H PAC-CLAD STANDING SEAM METAL ROOFING SYSTEM, SEAMS TO BE 18" O.C. (MATTE BLACK)
- 7.J ARCHITECTURAL ASPHALT SHINGLE ROOFING SYSTEM (DARK GREY)
- 7.K HARDI-PLANK HORIZONTAL LAP BATTON SIDING SYSTEM (KHAKI BROWN)
- 7.L PAC-CLAD STANDING SEAM METAL ROOFING SYSTEM, SEAMS TO BE 18" O.C. (SILVER)

**DIVISION 8 - DOORS & WINDOWS**

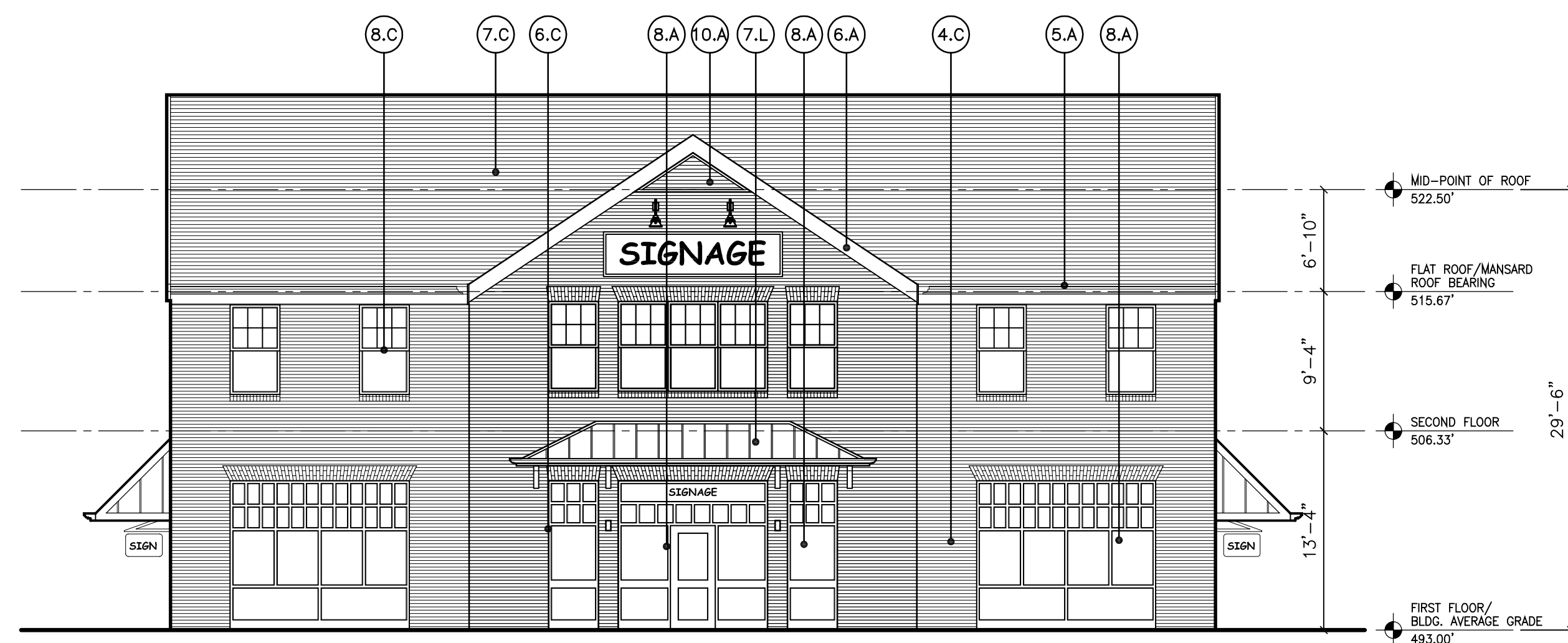
- 8.A ALUMINUM STOREFRONT
- 8.B HOLLOW METAL DOOR AND FRAME
- 8.C ALUMINUM DOUBLE HUNG WINDOW SYSTEM
- 8.D JAMB MOUNTED, INSULATED METAL ROLL-UP DOOR
- 8.I TELLER WINDOW

**DIVISION 10 - SPECIALTIES**

- 10.A FACTORY KYNAR FINISHED ALUMINUM LOUVER, WITH INSECT SCREEN
- 10.B RUBBER TRUCK BUMPERS



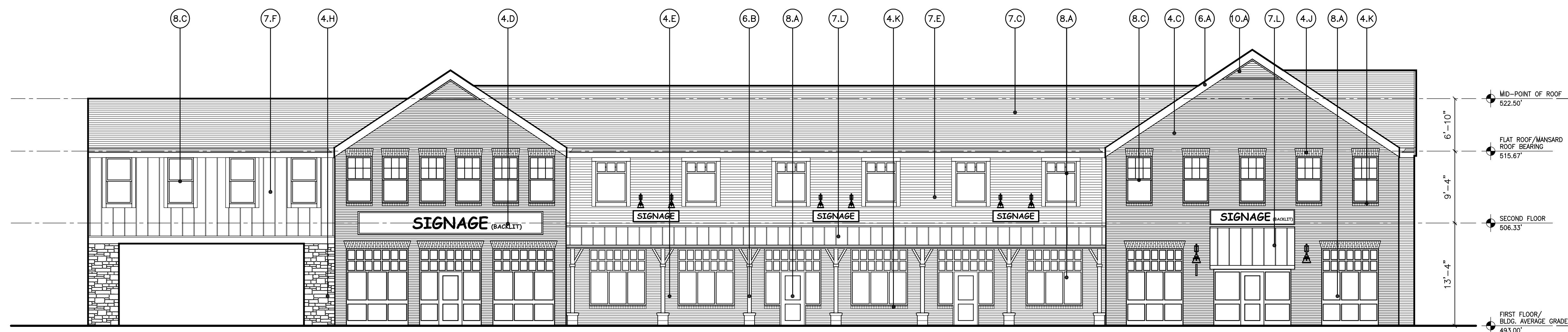
4 WEST ELEVATION  
B4 A3.01 SCALE: 1/8"=1'-0"



3 NORTH ELEVATION  
B4 A3.01 SCALE: 1/8"=1'-0"



2 SOUTH ELEVATION  
B4 A3.01 SCALE: 1/8"=1'-0"



1 EAST ELEVATION  
B4 A3.01 SCALE: 1/8"=1'-0"

DEVELOPER  
NICHOLS DEVELOPMENT, LLC  
18623 BROOKE RD.  
SANDY SPRING, MD 20886  
301-924-5258

DESIGN ARCHITECT  
ALMY ARCHITECTS  
11006 KENILWORTH AVE.  
GARRETT PARK, MD 20896  
301-949-7813

CIVIL ENGINEER  
MACRIS, HENDRICKS,  
& GLASCOCK, P.A.  
9220 WIGHTMAN RD., SUITE 120  
MONTGOMERY VILLAGE, MD 20886  
301-670-0840

STRUCTURAL ENGINEER  
MECHANICAL/ELECTRICAL  
/PLUMBING ENGINEER  
ANCONA & ASSOCIATES, INC.  
1888 VILLAGE GREEN, SUITE 201  
CROFTON, MD 21114  
301-261-6936

ARCHITECT  
**SEAN**  
Smolen + Emr  
11850 PARKWAY DRIVE  
ROCKVILLE, MD 20855  
301-770-0177

PROFESSIONAL SEAL:

NOT FOR  
CONSTRUCTION

PRINTS ISSUED

NO.	DESCRIPTION	DATE
1	PROGRESS SET	10/18/07

ASHTON MEETING PLACE  
NEW HAMPSHIRE AVE.  
& MD ROUTE 108  
ASHTON, MARYLAND

NEW FACILITY

SHEET TITLE  
BUILDING 4  
RESTAURANT, RETAIL,  
& OFFICE  
EXTERIOR ELEVATIONS

PROJECT NO.  
04004.05  
DATE  
Sep. 20, 2007  
SCALE  
AS NOTED  
SHEET NO.



**B4 A3.01**