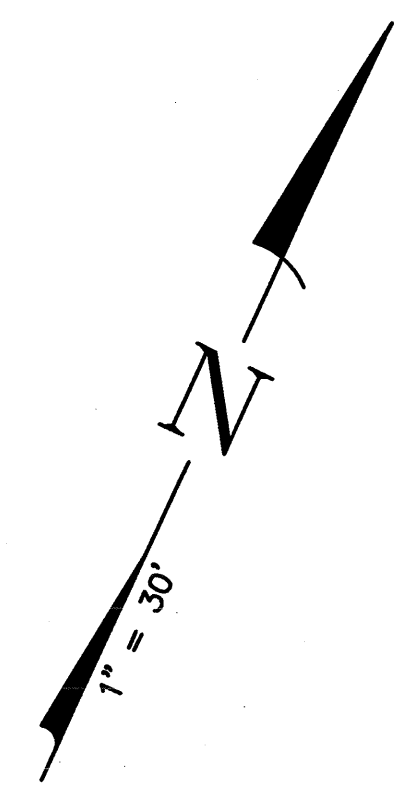
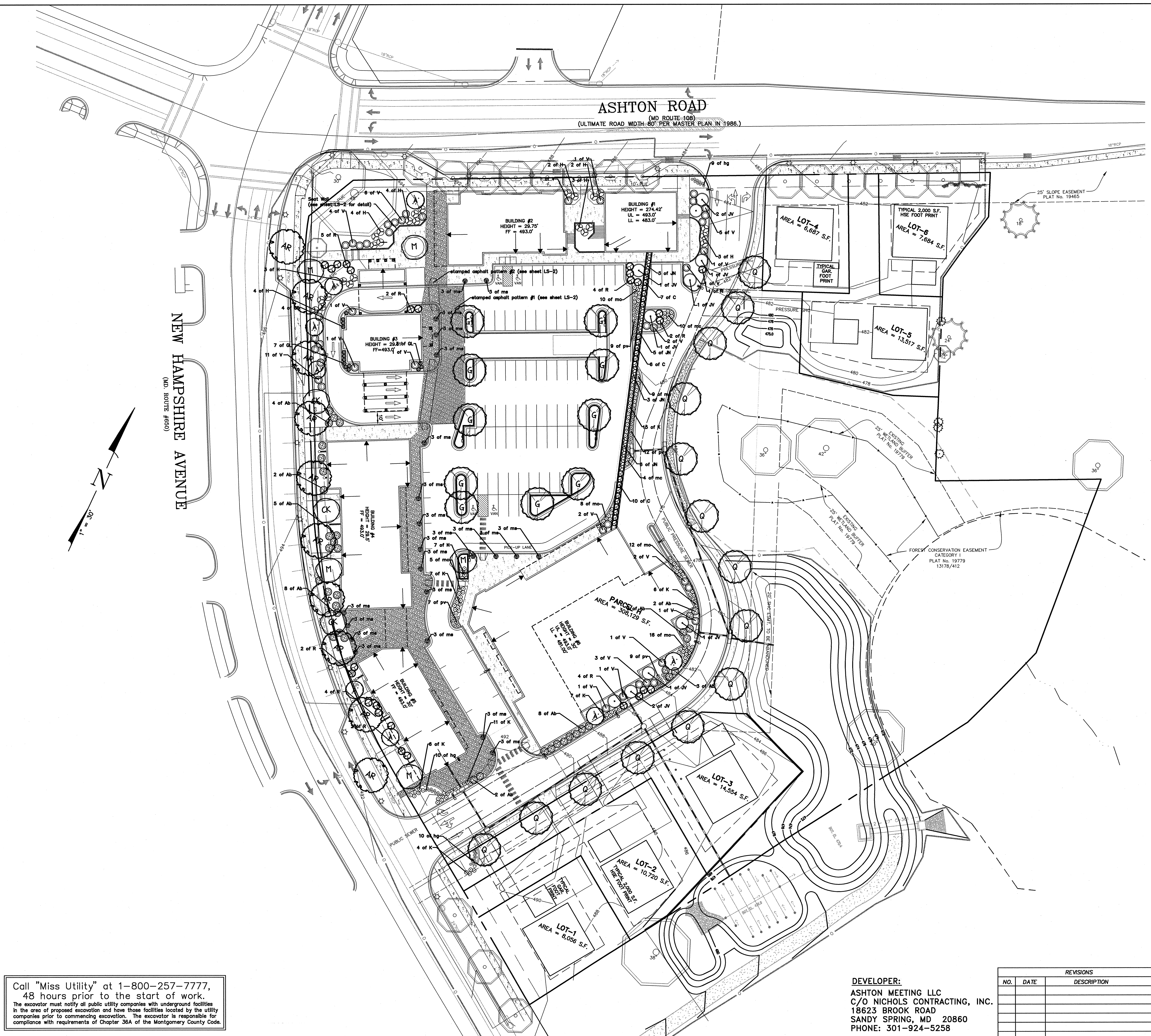


VICINITY MAP  
SCALE 1" = 2,000'



NEW HAMPSHIRE AVENUE  
(MD. ROUTE #660)

ASHTON ROAD  
(MD ROUTE 108)  
(ULTIMATE ROAD WIDTH 80' PER MASTER PLAN IN 1986.)

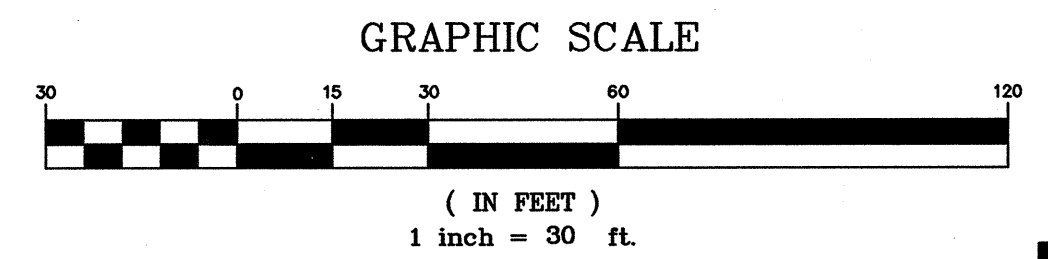
M-NCPPC APPROVAL STAMP

Certified Site Plan  
File No. \_\_\_\_\_  
Montgomery County Planning Board

Chairman or Designee \_\_\_\_\_ Date \_\_\_\_\_

**MONTGOMERY COUNTY PLANNING DEPARTMENT**  
THE MARYLAND-NATIONAL CAPITAL PARK AND PLANNING COMMISSION

**DEVELOPER'S CERTIFICATE**  
The Undersigned agrees to execute all the features of the Site Plan Approval No. \_\_\_\_\_, including Approval Conditions, Development Program, and Certified Site Plan.  
Developer's Name: \_\_\_\_\_ Company \_\_\_\_\_ Contact Person \_\_\_\_\_  
Address: \_\_\_\_\_  
Phone: \_\_\_\_\_  
Signature: \_\_\_\_\_



LS-1

TAX MAP JT42 M-NCPPC #820060230 WSSC 224 NW 01

LANDSCAPE PLAN  
ASHTON, PARCEL H & LOTS 1-6  
**ASHTON MEETING PLACE**  
LOT 1, PARCEL F, TP 356, TP 357, TP 411, TP 454, TP 456, TP 457, TP 464 & TP 509  
8TH ELECTION DISTRICT - MONTGOMERY COUNTY - MARYLAND

Call "Miss Utility" at 1-800-257-7777,  
48 hours prior to the start of work.  
The excavator must notify all public utility companies with underground facilities  
in the area of proposed excavation and have those facilities located by the utility  
companies prior to commencing excavation. The excavator is responsible for  
compliance with requirements of Chapter 36A of the Montgomery County Code.

DEVELOPER:  
ASHTON MEETING LLC  
C/O NICHOLS CONTRACTING, INC.  
18623 BROOK ROAD  
SANDY SPRING, MD 20860  
PHONE: 301-924-5258

REVISIONS		
NO.	DATE	DESCRIPTION

**MHG** Macris, Hendricks & Glascock, P.A.  
Engineers • Planners  
Landscape Architects • Surveyors

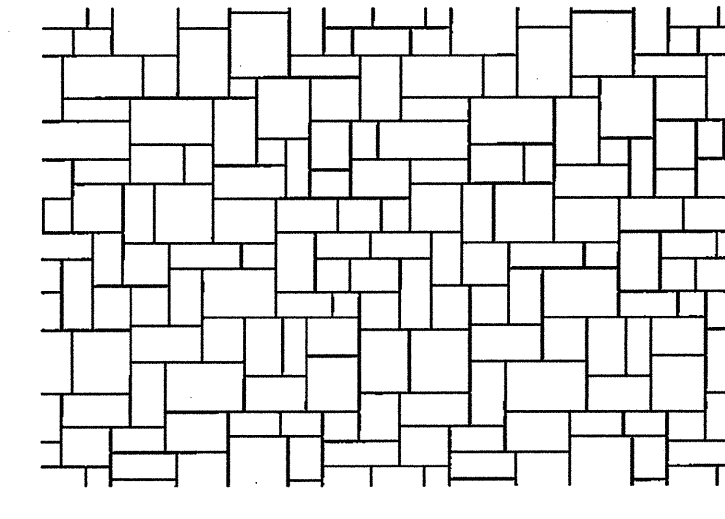
9220 Wightman Road, Suite 120  
Montgomery Village, Maryland  
20886-1279

Phone 301.670.0840  
Fax 301.948.0693  
www.mhga.com

Proj. Mgr. MDP	Designer BAB
Date 9-5-07	Scale 1" = 30'
Project No. 05-325-11	Sheet 1 of 3

**StreetPrint**  
making asphalt  
beautiful

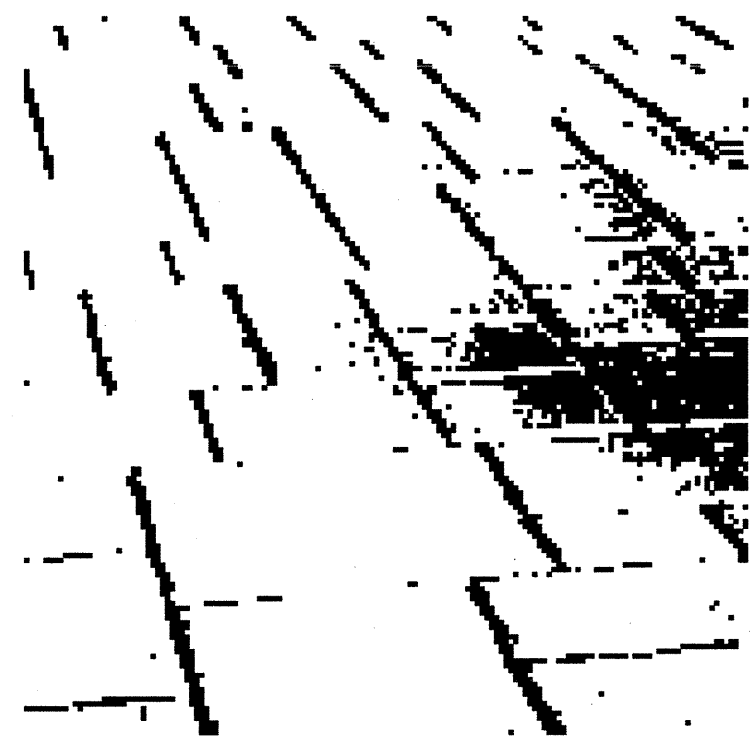
INTEGRATED PAVING CONCEPTS, INC.  
PMB 48, 938 PEACE PORTAL DRIVE  
BLAINE, WA 98230-4040  
PHONE: (804) 574-7510  
TOLL FREE: 1-800-688-6652  
FAX: (804) 574-7520  
www.streetprint.com



**ASHLAR SLATE**  
TEXTURED ASPHALT PAVEMENT PATTERN

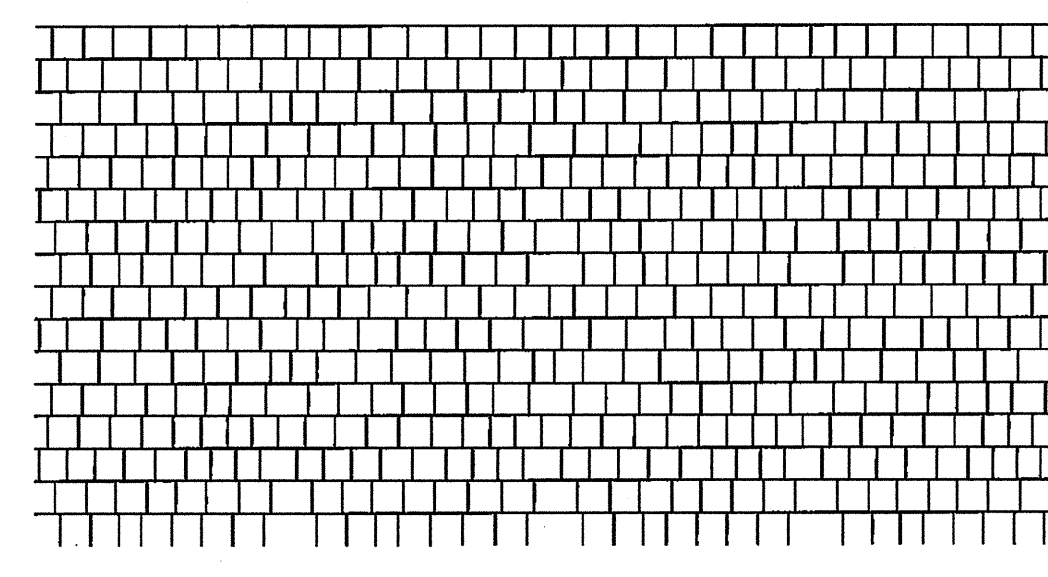
NOTES:  
1. INSTALLATION TO BE COMPLETED IN ACCORDANCE WITH MANUFACTURER'S SPECIFICATIONS.  
2. DO NOT SCALE DRAWINGS.  
3. CONFIRM PATTERN AND/OR TEXT PRIOR TO INSTALLATION.  
4. CONTACT MANUFACTURER FOR COLOR OPTIONS.  
5. CONTRACTOR'S NOTE FOR PRODUCT AND COMPANY INFORMATION VISIT [www.CADdetails.com/info](http://www.CADdetails.com/info)  
REFERENCE NUMBER 085-014.

085-014  
PROTECTED BY COPYRIGHT - 04/02/05 www.CADdetails.com



**StreetPrint**  
making asphalt  
beautiful

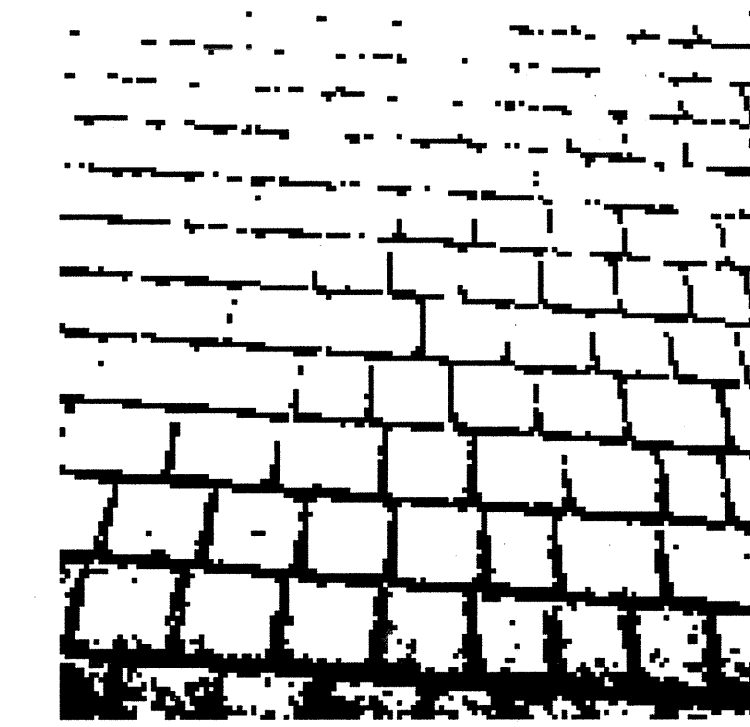
INTEGRATED PAVING CONCEPTS, INC.  
PMB 48, 938 PEACE PORTAL DRIVE  
BLAINE, WA 98230-4040  
PHONE: (804) 574-7510  
TOLL FREE: 1-800-688-6652  
FAX: (804) 574-7520  
www.streetprint.com



**BRITISH COBBLE**  
TEXTURED ASPHALT PAVEMENT PATTERN

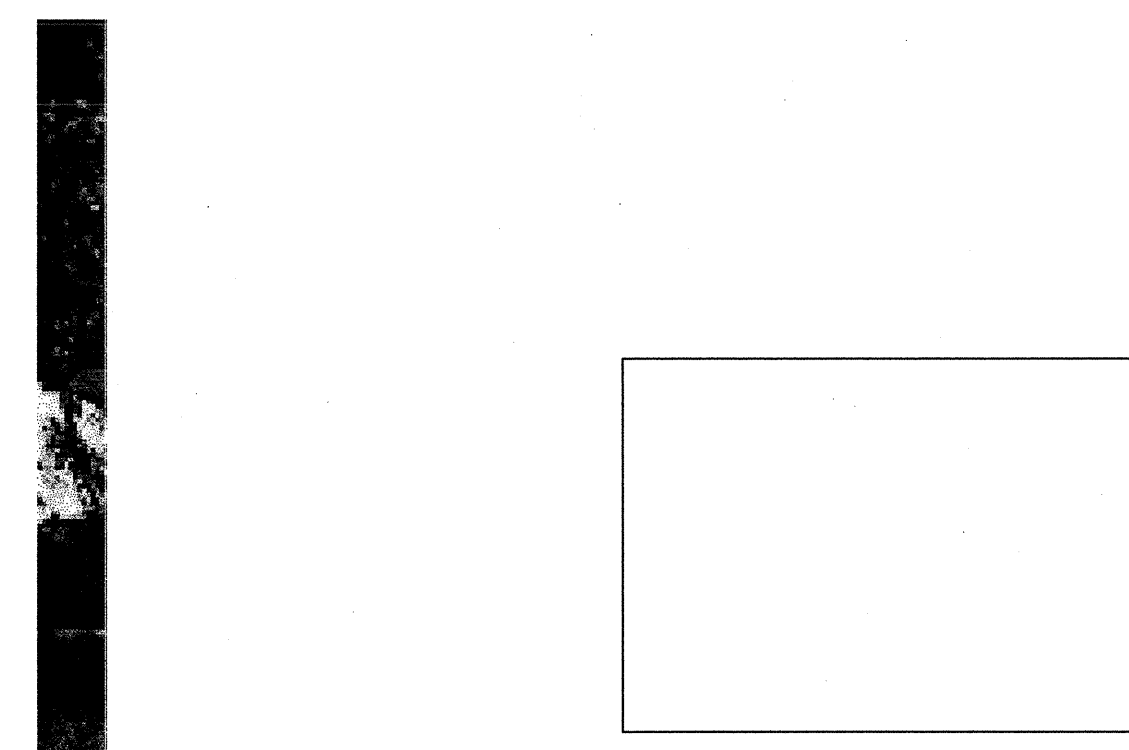
NOTES:  
1. INSTALLATION TO BE COMPLETED IN ACCORDANCE WITH MANUFACTURER'S SPECIFICATIONS.  
2. DO NOT SCALE DRAWINGS.  
3. CONFIRM PATTERN AND/OR TEXT PRIOR TO INSTALLATION.  
4. CONTACT MANUFACTURER FOR COLOR OPTIONS.  
5. CONTRACTOR'S NOTE FOR PRODUCT AND COMPANY INFORMATION VISIT [www.CADdetails.com/info](http://www.CADdetails.com/info)  
REFERENCE NUMBER 085-005.

085-005  
PROTECTED BY COPYRIGHT - 04/02/05 www.CADdetails.com



1 STAMPED ASPHALT DETAIL - PATTERN #1 (Ashlar Slate) COLOR (Slate)  
N.T.S.

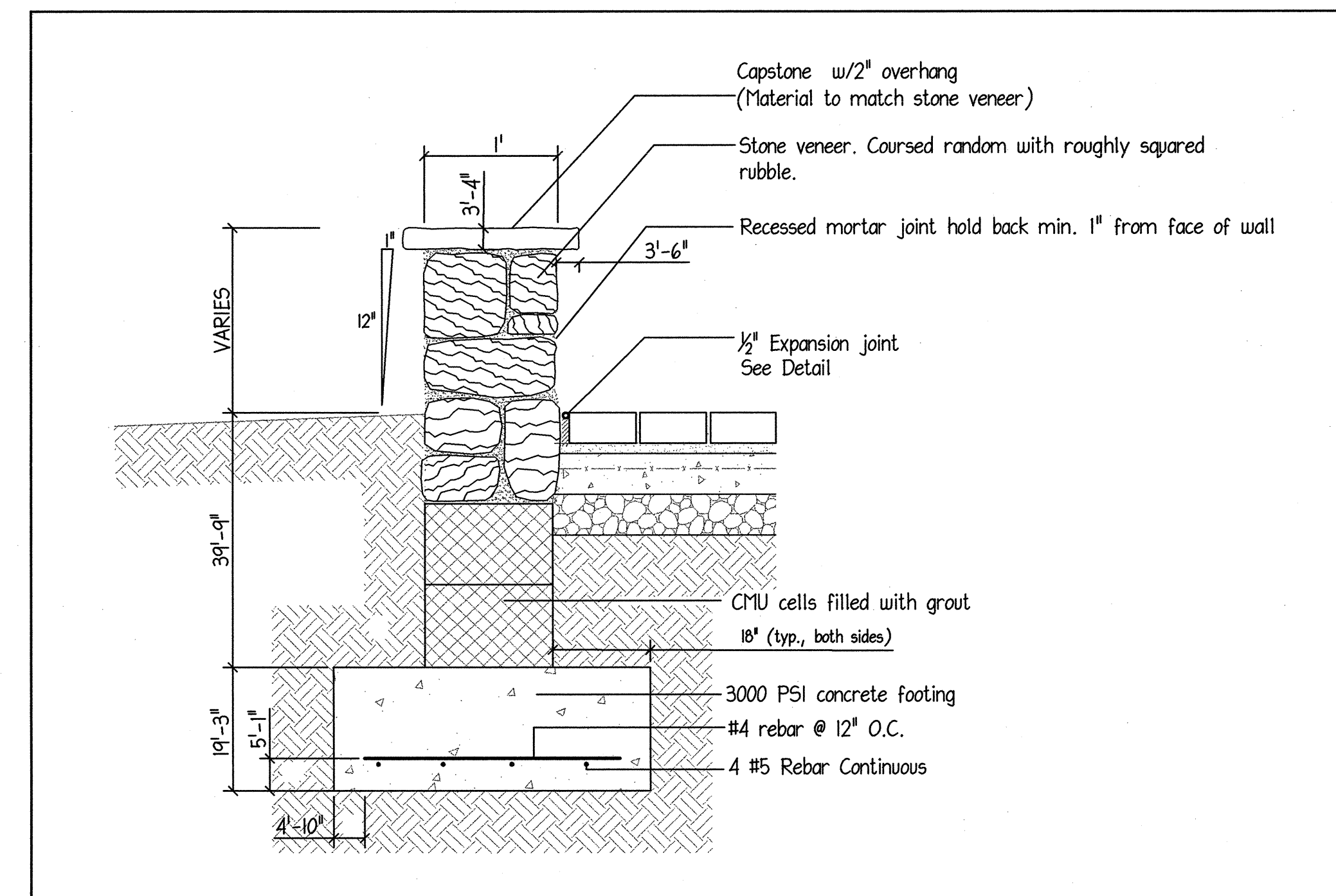
2 STAMPED ASPHALT DETAIL - PATTERN #2 (British Cobble) COLOR (Bedrock)  
N.T.S.



**PLANTERS FOR STREETSCAPE**  
NOT TO SCALE

TERRACAST/ Rotonics Mfg. Inc.  
Contemporary Planter - 48" (8CP48)  
Indian Sandstone  
6 PLANTERS FOR STREETSCAPE

3 PLANTER'S FOR STREETSCAPE - DETAIL  
N.T.S.



4 SEATING WALL DETAIL  
N.T.S.

LS-2

Call "Miss Utility" at 1-800-257-7777,  
48 hours prior to the start of work.  
The excavator must notify all public utility companies with underground facilities  
in the area of proposed excavation and have those facilities located by the utility  
companies prior to commencing excavation. The excavator is responsible for  
compliance with requirements of Chapter 36A of the Montgomery County Code.

M-NCPPC APPROVAL STAMP

Certified Site Plan  
File No. \_\_\_\_\_  
Montgomery County Planning Board

Chairman or Designee \_\_\_\_\_ Date \_\_\_\_\_

**MONTGOMERY COUNTY PLANNING DEPARTMENT**  
THE MARYLAND-NATIONAL CAPITAL PARK AND PLANNING COMMISSION

**DEVELOPER'S CERTIFICATE**  
The undersigned agrees to execute all the features of the Site Plan Approval  
No. \_\_\_\_\_, including Approval Conditions, Development Program,  
and Certified Site Plan.  
Developer's Name: \_\_\_\_\_ Company \_\_\_\_\_ Contact Person \_\_\_\_\_  
Address: \_\_\_\_\_  
Phone: \_\_\_\_\_  
Signature: \_\_\_\_\_

REVISIONS		
NO.	DATE	DESCRIPTION

LANDSCAPE PLAN  
ASHTON, PARCEL H & LOTS 1-6  
**ASHTON MEETING PLACE**  
LOT 1, PARCEL F, TP 356, TP 357, TP 411, TP 454, TP 456, TP 457, TP 464 & TP 509  
8TH ELECTION DISTRICT - MONTGOMERY COUNTY - MARYLAND

**MHG** Macris, Hendricks & Glascock, P.A.  
Engineers ■ Planners  
Landscape Architects ■ Surveyors

9220 Wightman Road, Suite 120  
Montgomery Village, Maryland  
20886-1279  
Phone 301.670.0840  
Fax 301.948.0693  
www.mhgspe.com

Proj. Mgr. MDP	Designer BAB
Date 9-5-07	Scale NONE
Project No. 05-325-11	Sheet 2 of 3

